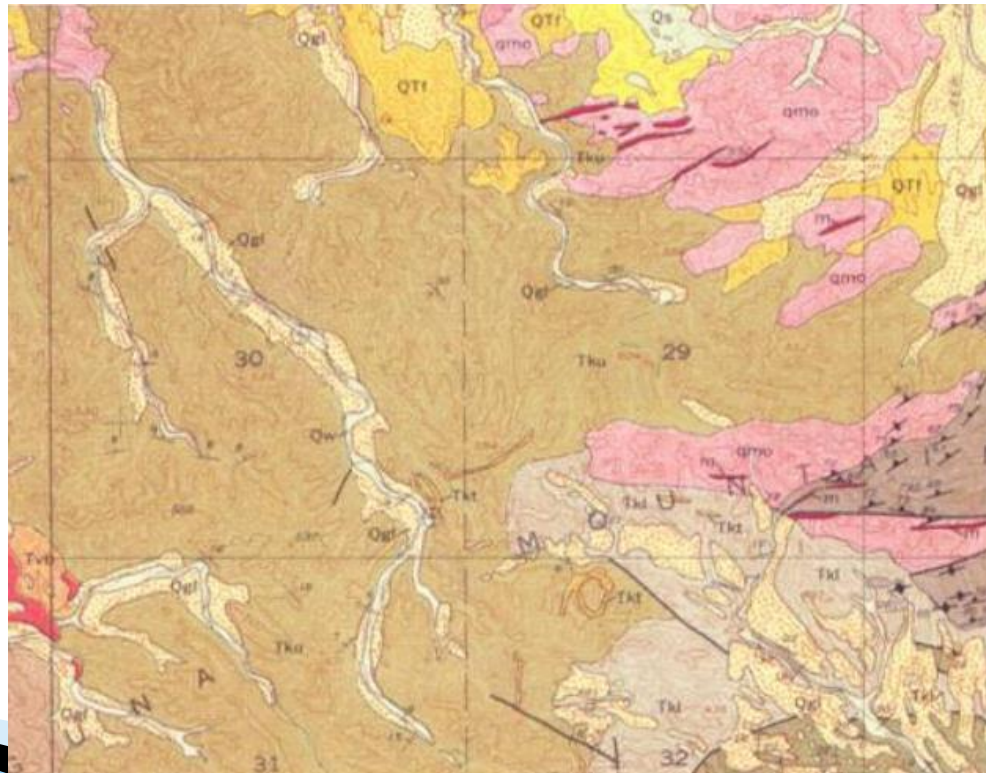


Thematic Maps



1. Planimetric Maps
2. Topographic Maps
3. Thematic Maps
4. Cartograms
5. Remotely Sensed Images

- ▶ Thematic maps show information about any one of myriad special topics superimposed on a base map. Type of thematic maps are include geologic, forestry, soil, land-use, slope and historical.

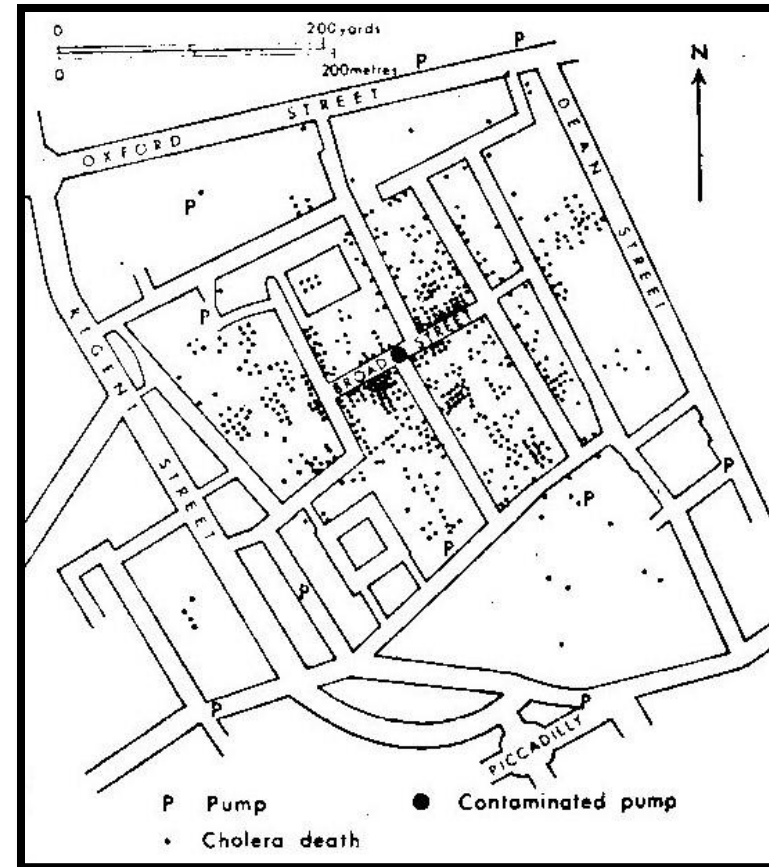




- ▶ Data may be represented by
 1. Dot–distribution maps
 2. Choropleth maps
 3. Isoline maps
 4. Flow maps
 5. Other symbols (e.g. proportional circles, bar graphs, etc.)

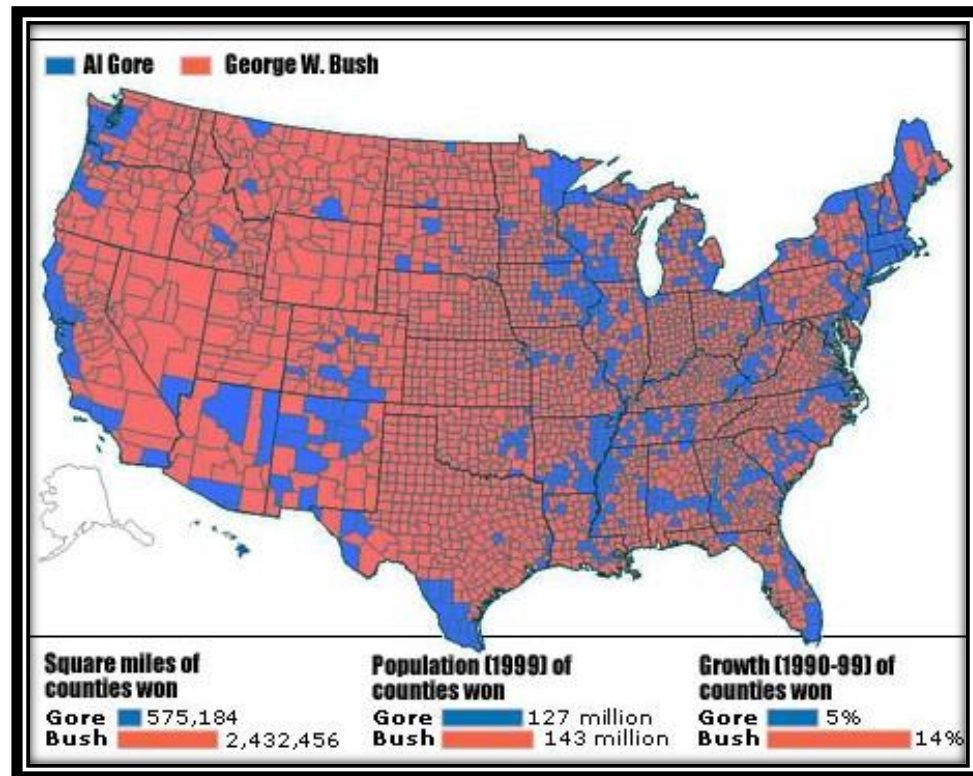
- ▶ 1. Qualitative: non-numeric, nominal attribute data(e.g. land use, soil types, languages)
- 2. Quantitative: numeric; spatial aspects of numerical data (e.g. corn yield, per capita income, number of tornadoes, population density)

- ▶ Dot-distribution maps; in this map, dots are used to represent a specific quantity of a variable.
- ▶ A variables presented range from the number of cattle on farms to the distribution of human populations.

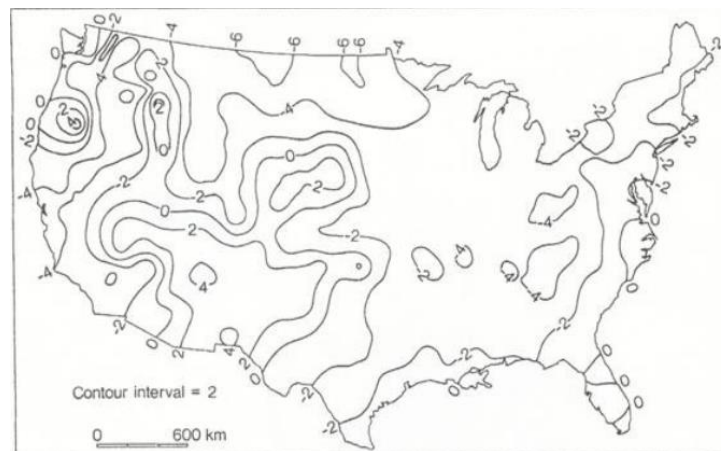


choropleth maps

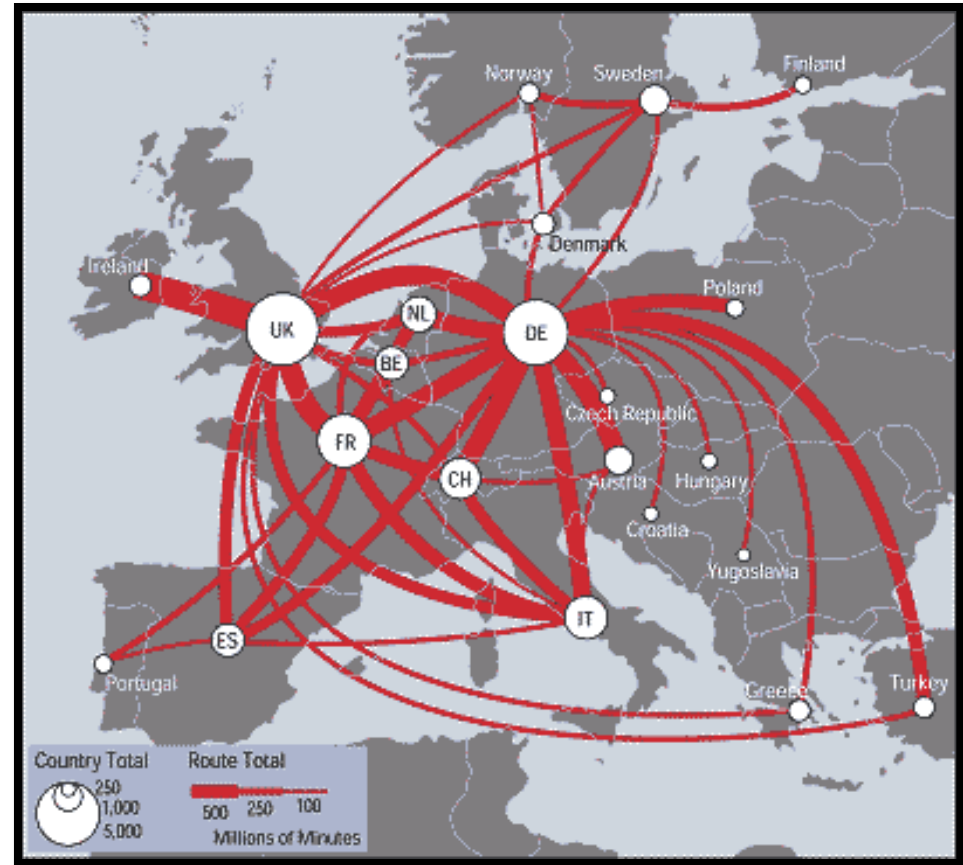
- ▶ Thematic maps that show distributions summarized on the basis of areas delimited by country boundaries or other arbitrary boundary lines are called **choropleth maps**.
- ▶ In this map, each area colored, shaded, dotted, or hatched to appear as a darker or lighter tone.



- ▶ Isoline maps show numerical values for continuous distributions by means of lines joining points of equal value.



- ▶ Flows maps are another type of thematic maps that show the direction and amount of movement, as well as the types of goods or services moved.



What are three types of flow map?



- ▶ Radial flow map: radiated Out of or into “central places”
 - e.g. traffic flow
- ▶ Network flow map: among places on the infrastructure
 - e.g. telephone calls between cities
 - good to show spatial interaction between places
- ▶ Distribution flow map: a collection from place to place with branching
 - e.g. trade flow, diffusion of idea, migration flow

types of flow map

- ▶ Radial flow map
- ▶ Network flow map
- ▶ Distribution flow map

